

# Hallblacks New Zealand

## Breeds



**Merino** – fine, soft wool. Waxy tips. Can be spun into delicate or chunky yarn. Medium length staple. Wonderful close to sensitive skin.



**New Zealand Halfbred** - a Merino-longwool cross, in our case Romney. Soft, fine wool. Medium to long staple. If spun into bulky yarn it will be lightweight.



**Polwarth** – fine, soft wool - similar use to merino - good against skin. Longer staple than Merino. Breed origin - one part Lincoln and three parts Merino.



**Corriedale** – Similar to Halfbred, but from Merino and English Leicester in origin. Fleeces usually larger. Spins fine or bulky. Medium to long staple.



**Dorset Down** – Fine, soft wool. Easy to spin but short staple. Used for soft baby- wear and shawls before Merino became available.



**Romney** – all-purpose breed – heavier, lustrous, hard-wearing yarn. We are developing a flock with long, soft wool

# Hallblacks New Zealand Breeds



English Leicester – Lustrous strong wool. Can be spun into fine yarn but will produce a heavy garment which is very hard-wearing. Long- stapled sheep breed.



Lincoln – Very long- woolled sheep. Extremely lustrous. Resembles soft human hair and can be used for wig making

## Sliver



Fifty carded fleeces are on display at any time.

We card all types of fleece, but care and knowledge is required in deciding which Merino fleeces will card satisfactorily. We are planning to have black fleeces turned into 'top' which goes through more carding/combing processes than regular sliver.

Polwarth, Corriedale, and Halfbred fleeces card very well.

These and the Merino fleeces have different detergent requirements from long wools for washing. They are the fleeces we use when teaching people how to spin.

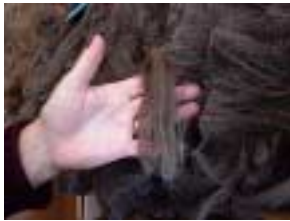
Romney and English Leicester fleeces card well if they are not too long. Wastage can occur if very long fleeces are carded.

Lincoln and Dorset Down fleeces have not yet been carded

# Hallblacks New Zealand Fleeces



Sixty fleeces are on display at all times in our Woollery. Generally clients buy the whole fleece and fleeces range from two to four kilograms. Natural wool fibres will last for decades if cared for well. Contrary to common belief, woollen garments are very easy to wash – once you know how! We stock a very good detergent for washing wool. Ask us for advice.



**Halfbred**



**English Leicester**



**Romney**



**Lincoln**

# Hallblacks New Zealand Yarns



Hallblacks fleeces are processed into handspun and millspun yarns and we also stock felted and commercial knitting yarns. All Hallblacks yarns are labelled with individual names and breeds of the animals which supplied the fleeces.



Mary and Selwyn, with contracted spinners, produce a large variety of yarns. This Navaho-plied yarn containing up to thirty colours is very popular.



Tekapo yarns from Ashfords give our Woollery colour and variety.



Commercially felted Merino singles made by a cousin.

# Hallblacks New Zealand Knitwear

Hallblacks produce knitwear which reflects the skill and diversity of New Zealand knitters. From the very popular 'farm' jerseys to the more intricately fashioned garments, the stock is designed to look good and keep the wearers warm.



Each square has a different texture



Our own design with funnel neck and diagonal ridges.



Different patterns in horizontal layers.



Multi-coloured garments show off the range of natural colours now available. Visitors often express disbelief at the variety of colours. Many then want to see the sheep which produce such surprising shades.



Polo jumper with cables. All garments are hand-knitted and most are made from handspun yarn.



Fly fishermen love our lammies

# Hallblacks New Zealand Knitwear



Most of our garments are large in size and generally unisex ones – even if we have photographed them on a female model.



Roll neck jumper with raised stitches.



Some of our patterns date back to 1940 and we can usually find what people want somewhere.



Funnel neck jumper in felted merino yarn.



This tree pattern is very popular.



Textured jumper with diagonal effect.

# Hallblacks New Zealand Spinning

Hallblacks stock spinning accessories, most of which are Ashford products. Our prices are those recommended by Ashfords and are the same as the factory would charge retail customers. We do, on occasions, offer specials.



**The Ashford Elizabeth wheel**



**The Ashford Traditional wheel**



**Ashford's Joy. It folds up and fits into a bag to make it very portable.**



**Ashford's Kiwi wheel. This is real value for money.**



**The Ashford electronic wheel, a must for busy spinners. Halves the spinning time for me. We also offer second-hand wheels and drum-carders for sale when available.**

# Hallblacks New Zealand Woollery

The Woollery is our display area. The Woollery is open at any time, by appointment, which means that you need to call us first in case we are out on the farm somewhere. If Mary and Selwyn do not know where something is to be obtained, they probably know someone else who does – or it will become a challenge for them to find out.



Eleven hundred square feet of wool and spinning products have been called a 'treasure trove' by visitors.



We have baby shawls, wonderful first - grandchild gifts for busy grandparents. Many have found their way overseas.



Two showrooms, a kitchen, a bathroom, and a loft give us ample room to show Hallblacks products to advantage. A 'cuppa' is available to clients.



Matinee jackets are also useful first baby gifts.



Handmade books, by a sister, are usually available. A small display of local craft is usually present - patchwork cushions, needle-felted items.



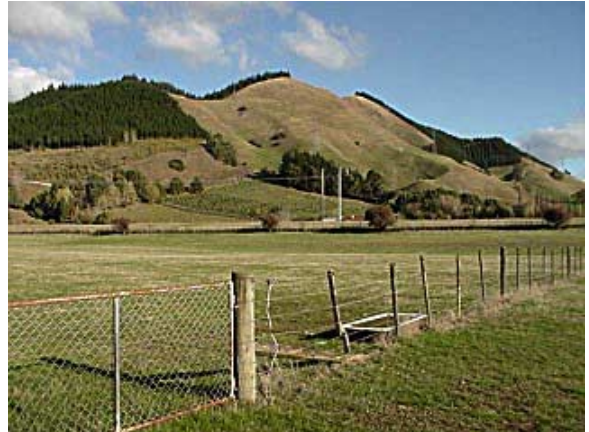
We stock Ashford dyes, acid exhaust ones. Felting packs are available.

# Hallblacks New Zealand Us

At Hallblacks we love to learn. Our business is based on the love of research, development, and learning how to improve products. Mary is passionate about developing the flock by natural selection, and Selwyn is a great farmer. Both love the business but the well-being of the animals and the satisfaction of customers are paramount to them.



**Selwyn and Mary Hall love to meet people and to learn of other places and crafts.**



**Mt Heslington.**



**Frank Bint shears the Hallblacks flock. He is one of the ten best shearers in his class in New Zealand so we are fortunate to have him on the team. He scarcely complains about the huge wethers he has to shear, and they are bigger than he is.**

**(Jeff Mein Smith photo)**